



# ~Barbara~

Designed by

*Fashion Dolls in Miniature*



Introduction;

Doll body used **Ethel** by Doreen sinnet.

If you use a different type of doll, please adjust the patterns to fit your doll. Try first with kitchen roll and make the necessary changes.

### **Used materials:**

- White or of white cotton for underwear
- Tartan beige silk for skirt and sleeves.
- Wine read silk for bodice.
- Off white silk for yoke.
- Matching trim for skirt
- Lace for underskirt and pantaloon.
- Buttons
- Viscose for hair.
- Pipe cleaners.
- 

### **Extra needed (to supply yourself)**

- Chair

### **Tools needed:**

- Glue dispenser.
- Tweezers.
- Small scissors with fine tips.
- Super glue
- White glue (ex. Aleene's Tacky-glu).
- Textile stiffener (Stiffen Stuff).
- Needle and thread in colours that agree with fabric.

## Directions:

**1. Boots:** Paint shoes with an acrylic colour of your choice. Seal acrylic paint with nail polish or acrylic transparent lacquer. Let dry well.

**2. Doll Body Construction  $\frac{1}{2}$  arms and  $\frac{1}{2}$  legs.**

- Pipe cleaners
- Knitting wool to reinforce legs and arms
- Tacky-glu
- Super glue



Twist 2 pipe cleaners together. Bend in  $\frac{1}{2}$  leaving a small hole. Glue into body cavity.

Measure 13.5 cm. - 14 cm. (5,3 to 5,5 inches) tall for a woman and 15 cm (5,9 inches) for a man. Just be advised for this doll, that you take in account the height of your chair. The doll has to reach with her legs to the floor. So it could be possible that the legs of your dolls are a little

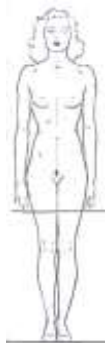
bit longer. Glue feed unto the pipe cleaners. Reinforce legs with knitting wool.

Take another pipe cleaner bent in half, and twist together. Cut into 2 pieces. Glue pipe cleaners to exact length for the arms, but do not glue arm into the body yet. This makes it easier to dress your doll.

### Length of the arms.

Look for the length of the dolls arms to your own arms into a mirror.

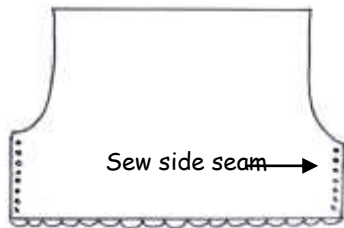
The point of my hands reaches a little bit longer than half of my thighs.



**Underpants:** Cut the pieces from white cotton.



Turn hem and glue.



Glue lace here

Glue / sew the hem to inside. Decorate with a piece of lace. Sew long side seam together. Sew crotch from front to back. Gather waist. Pull the underpants on to your doll, secure in place under the waist. I try to push as much fabric under the porcelain body.

**Underskirt:**

Cut the underskirt from white cotton fabric. Glue hem to inside. Decorate the hemline with lace if you wish. Gather waist and close back seam. Pull on your doll, and fix in place at waist.

**Skirt:** Cut your skirt pattern 5 x from tartan silk.

Connect the sides together. Leave the last side seam open.

Make a small hem at underside of your skirt.

Take your decoration trim or cord (what you have) and sew or glue this in place at 1 cm from hem line.

Close last side seam, leaving 2 cm (0,8 inches) opening on this side seam.

Pull skirt onto your doll. Pin the skirt in place so it gets a natural flow.

**Yoke:**

Preparation for yoke.



Take a strip of silk, width a little bit wider than the pattern. Length about 4 times the size of the yoke.  
Pleat this piece of silk in your pleater. When dry, lift this out the pleater, and iron the pleats all to one side.  
Cut from this pleated piece of silk your yoke pattern.  
If you do not have a pleater you can cut this yoke from lace without pleats. Just like you want or have.  
Glue this yoke onto the front of your dolls chest.



**Bodice.**

Cut pattern piece from wine red silk.  
Front and back is one piece.

Put hem where indicated onto the pattern.

Connect side seams.

Pull on doll and fix in place.

To decorate the neckline, I took a strip of tartan silk. Wide 0,75 cm.( 0.3 inches). Length = the complete length of the front, around the neck and back to the front.

Glue the 2 long sides to the inside. Now you have a beautiful finished piece of tartan silk to decorate the neckline. Finish off with buttons, at front side of your dress.

### **Sleeves**

Cut the sleeves from tartan silk. Make a hem at underside.

Close side seams. Pull gathering tread at top of sleeve.

Pull sleeves over your hands arms.

Glue the pipe cleaners into the body of your doll.

Pull gathering tread, and sew the sleeve into place.

### **Belt.**

I also finished of waist line with a narrow strip of tartan silk.

The width: 0.75cm = 0,3 inches

The length : the size of the dolls waist +0.50 cm = 0,2 inches extra.

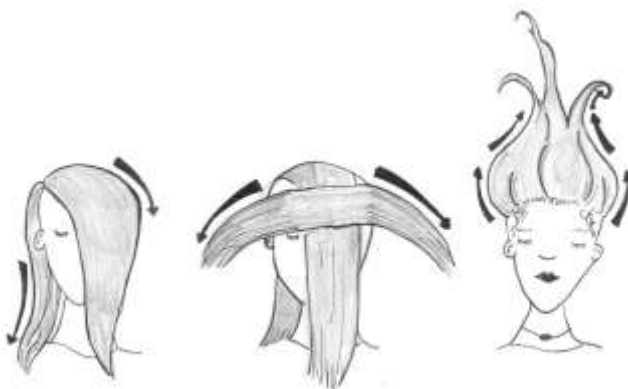
Glue the both long sides to the inside. Glue this strip around the waist of your doll.

### **Hair**

**Do the Basic Wiggling.**

Put glue all over dolls head, following basic hair line.  
Follow diagram below and gently place the hair on your dolls head.

Flip it do the back and fix it in place, with a matching tread or with a little bit of glue. And make a bun. When you make your bun higher or lower this will give you a total different effect.



This manual is only for private use and may not be multiplied or used commercially without the written authorization of

## **Fashion Dolls in Miniature**

Tel : 00 32 2 307 85 82

E-mail : [dollsinminiature@pandora.be](mailto:dollsinminiature@pandora.be)  
[dollsinminiature@telenet.be](mailto:dollsinminiature@telenet.be)

Website: [www.dollsinminiature.com](http://www.dollsinminiature.com)



